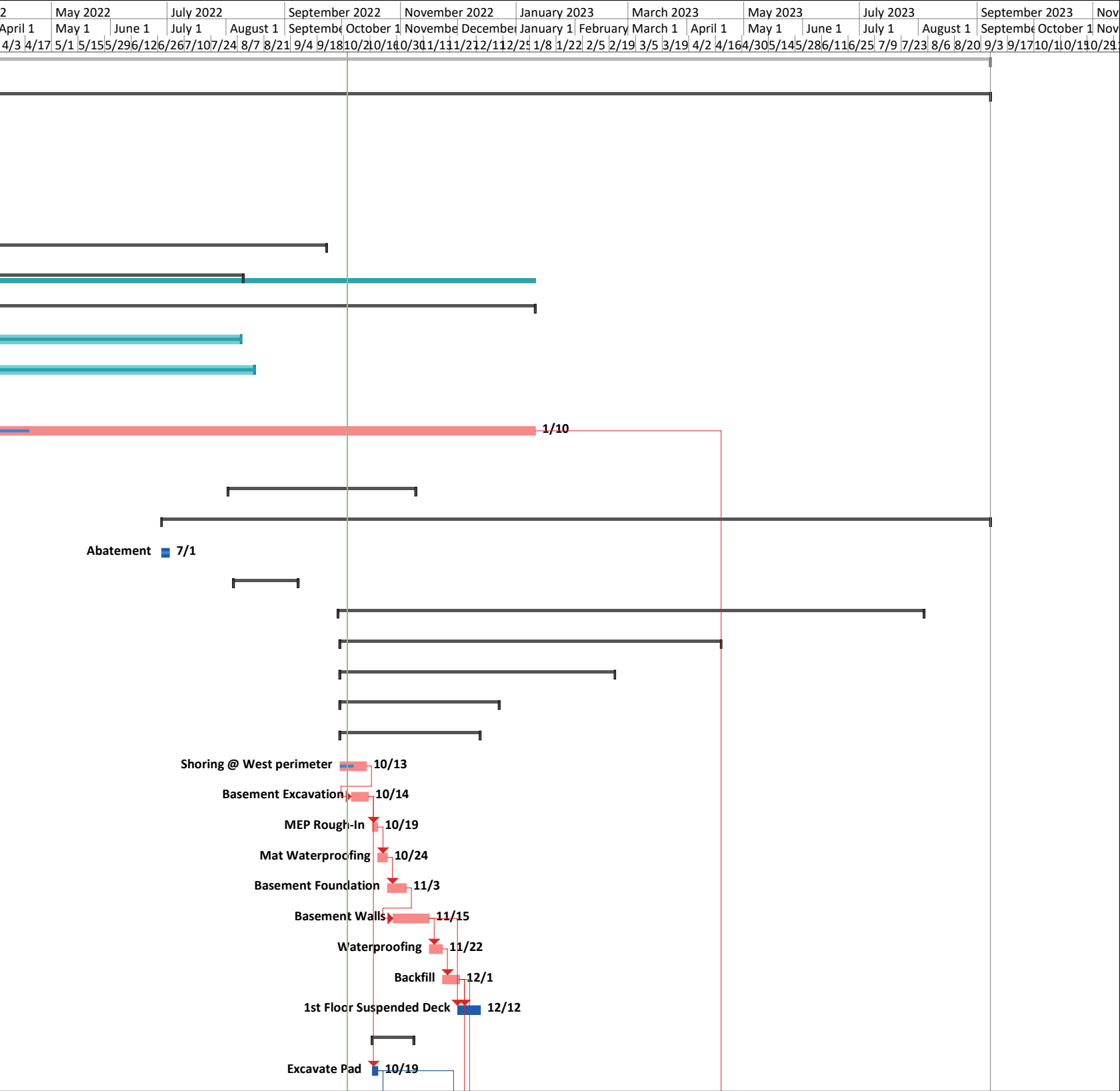


WFPD - Fire Station 7 Program Schedule

ID	Task Mode	Task Name	Duration	Start	Finish	% Complete	2022		2023		2024		2025		2026		2027		2028		
							April	May	June	July	August	September	October	November	December	January	February	March	April	May	June
0	→	WFPD - Program Schedule Station 7	738 days	Thu 10/22/20	Thu 9/7/23	38%															
1	→	New Station 7 - Woodside	738 days	Thu 10/22/20	Thu 9/7/23	38%															
2	→	Planning Approval / Conditions Issue - Town of Woodside	1 day	Thu 10/22/20	Thu 10/22/20	0%															
3	→	Owner Final Bridging Documents (BOD/Survey/Civil/Landscape/FFE)	100 days	Thu 2/11/21	Wed 6/30/21	0%															
4	→	VBI Permit Design	221 days	Fri 10/23/20	Fri 8/27/21	0%															
8	→	Permitting	453 days	Wed 12/16/20	Thu 9/22/22	100%															
19	→	PGE	126 days	Fri 2/11/22	Tue 8/9/22	62%															
20	→	Approvals Required	231 days	Fri 2/11/22	Tue 1/10/23	62%															
21	→	PGE Primary shut-off	124 days	Mon 2/14/22	Mon 8/8/22	100%															
22	→	Temp Power	126 days	Thu 2/17/22	Mon 8/15/22	100%															
23	→	New Service Upgrade - Design / Intent / Globals / Submit	1 day	Fri 2/11/22	Fri 2/11/22	100%															
24	→	New Service Upgrade - Design / Intent / Globals / Approv	230 days	Mon 2/14/22	Tue 1/10/23	20%															
25	→	ATT/T-Mobile COW	104 days	Tue 5/4/21	Mon 9/27/21	100%															
31	→	Procurement	70 days	Tue 8/2/22	Tue 11/8/22	55%															
34	→	Construction	307 days	Tue 6/28/22	Thu 9/7/23	5%															
35	→	Abatement	4 days	Tue 6/28/22	Fri 7/1/22	100%															
36	→	Demolition	23 days	Fri 8/5/22	Wed 9/7/22	100%															
40	→	New Construction	217 days	Thu 9/29/22	Thu 8/3/23	1%															
41	→	Shell	139 days	Fri 9/30/22	Tue 4/18/23	2%															
42	→	Structure	99 days	Fri 9/30/22	Tue 2/21/23	3%															
43	→	Foundations	58 days	Fri 9/30/22	Thu 12/22/22	5%															
44	→	Basement	50 days	Fri 9/30/22	Mon 12/12/22	8%															
45	→	Shoring @ West perimeter	10 days	Fri 9/30/22	Thu 10/13/22	50%															
46	→	Basement Excavation	7 days	Thu 10/6/22	Fri 10/14/22	0%															
47	→	MEP Rough-In	3 days	Mon 10/17/22	Wed 10/19/22	0%															
48	→	Mat Waterproofing	3 days	Thu 10/20/22	Mon 10/24/22	0%															
49	→	Basement Foundation	8 days	Tue 10/25/22	Thu 11/3/22	0%															
50	→	Basement Walls	13 days	Fri 10/28/22	Tue 11/15/22	0%															
51	→	Waterproofing	5 days	Wed 11/16/22	Tue 11/22/22	0%															
52	→	Backfill	5 days	Wed 11/23/22	Thu 12/1/22	0%															
53	→	1st Floor Suspended Deck	8 days	Thu 12/1/22	Mon 12/12/22	0%															
54	→	Level 1 Shop / Reserve App Bays	16 days	Mon 10/17/22	Mon 11/7/22	0%															
55	→	Excavate Pad	3 days	Mon 10/17/22	Wed 10/19/22	0%															

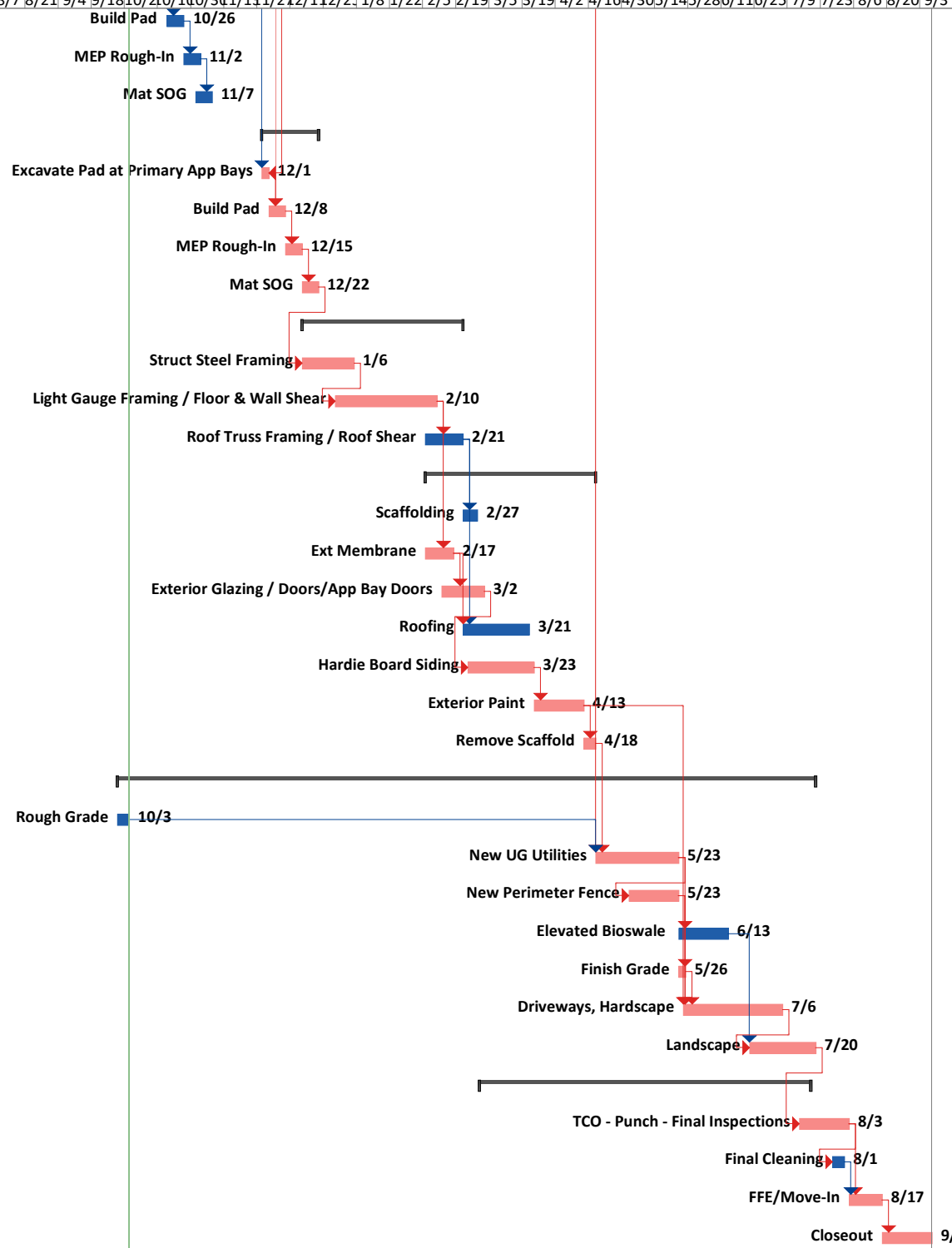


Project: WFPD - Program Schedul
9.28.2022

Task	Summary	External Milestone	Inactive Summary	Manual Summary Rollup	Finish-only	Critical Split
Split	Project Summary	Inactive Task	Manual Task	Manual Summary	Deadline	Progress
Milestone	External Tasks	Inactive Milestone	Duration-only	Start-only	Critical	Manual Progress

WFPD - Fire Station 7 Program Schedule

ID	Task Mode	Task Name	Duration	Start	Finish	% Complete	Timeline																				
							2022	May 2022			July 2022			September 2022		November 2022		January 2023		March 2023		May 2023		July 2023		September 2023	
							April 1	May 1	June 1	July 1	August 1	September 1	October 1	November 1	December 1	January 1	February 1	March 1	April 1	May 1	June 1	July 1	August 1	September 1	October 1	November 1	
56		Build Pad	5 days	Thu 10/20/22	Wed 10/26/22	0%																					
57		MEP Rough-In	5 days	Thu 10/27/22	Wed 11/2/22	0%																					
58		Mat SOG	5 days	Tue 11/1/22	Mon 11/7/22	0%																					
59		Level 1 Primary (center) App Bays	18 days	Tue 11/29/22	Thu 12/22/22	0%																					
60		Excavate Pad at Primary App Bays	3 days	Tue 11/29/22	Thu 12/1/22	0%																					
61		Build Pad	5 days	Fri 12/2/22	Thu 12/8/22	0%																					
62		MEP Rough-In	5 days	Fri 12/9/22	Thu 12/15/22	0%																					
63		Mat SOG	5 days	Fri 12/16/22	Thu 12/22/22	0%																					
64		Structural Frame	46 days	Fri 12/16/22	Tue 2/21/23	0%																					
65		Struct Steel Framing	14 days	Fri 12/16/22	Fri 1/6/23	0%																					
66		Light Gauge Framing / Floor & Wall Shear	30 days	Fri 12/30/22	Fri 2/10/23	0%																					
67		Roof Truss Framing / Roof Shear	12 days	Mon 2/6/23	Tue 2/21/23	0%																					
68		Envelope	52 days	Mon 2/6/23	Tue 4/18/23	0%																					
69		Scaffolding	4 days	Wed 2/22/23	Mon 2/27/23	0%																					
70		Ext Membrane	10 days	Mon 2/6/23	Fri 2/17/23	0%																					
71		Exterior Glazing / Doors/App Bay Doors	14 days	Mon 2/13/23	Thu 3/2/23	0%																					
72		Roofing	20 days	Wed 2/22/23	Tue 3/21/23	0%																					
73		Hardie Board Siding	20 days	Fri 2/24/23	Thu 3/23/23	0%																					
74		Exterior Paint	15 days	Fri 3/24/23	Thu 4/13/23	0%																					
75		Remove Scaffold	3 days	Fri 4/14/23	Tue 4/18/23	0%																					
76		Site Work	207 days	Thu 9/29/22	Thu 7/20/23	0%																					
77		Rough Grade	3 days	Thu 9/29/22	Mon 10/3/22	0%																					
78		New UG Utilities	25 days	Wed 4/19/23	Tue 5/23/23	0%																					
79		New Perimeter Fence	15 days	Wed 5/3/23	Tue 5/23/23	0%																					
80		Elevated Bioswale	15 days	Wed 5/24/23	Tue 6/13/23	0%																					
81		Finish Grade	3 days	Wed 5/24/23	Fri 5/26/23	0%																					
82		Driveways, Hardscape	30 days	Fri 5/26/23	Thu 7/6/23	0%																					
83		Landscape	20 days	Fri 6/23/23	Thu 7/20/23	0%																					
84		Interiors	100 days	Wed 3/1/23	Tue 7/18/23	0%																					
99		TCO - Punch - Final Inspections	15 days	Fri 7/14/23	Thu 8/3/23	0%																					
100		Final Cleaning	3 days	Fri 7/28/23	Tue 8/1/23	0%																					
101		FFE/Move-In	10 days	Fri 8/4/23	Thu 8/17/23	0%																					
102		Closeout	15 days	Fri 8/18/23	Thu 9/7/23	0%																					



Project: WFPD - Program Schedul 9.28.2022	Task	Summary	External Milestone	Inactive Summary	Manual Summary Rollup	Finish-only	Critical Split
	Split	Project Summary	Inactive Task	Manual Task	Manual Summary	Deadline	Progress
	Milestone	External Tasks	Inactive Milestone	Duration-only	Start-only	Critical	Manual Progress